

# State of Wyoming Corner Record

*(In compliance with the CORNER PERPETUATION AND FILING ACT, Wyoming Statutes, 1997 Section 33-29-140 et. seq., and the Rules and Regulations of the Board of Professional Engineers and Professional Land Surveyors)  
Reverse side of this form may be used if more space is needed.*

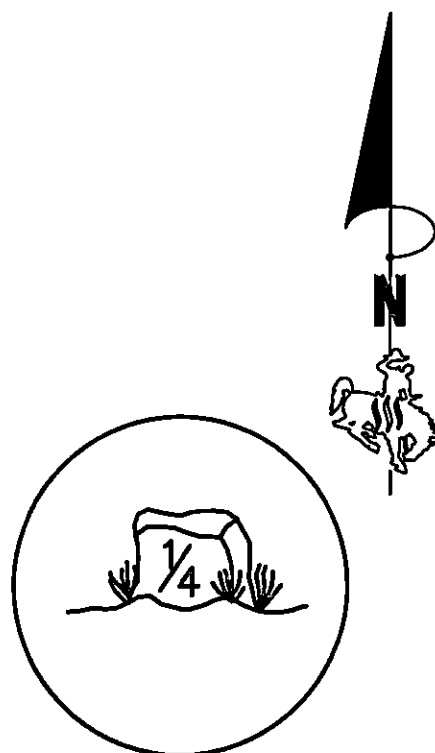
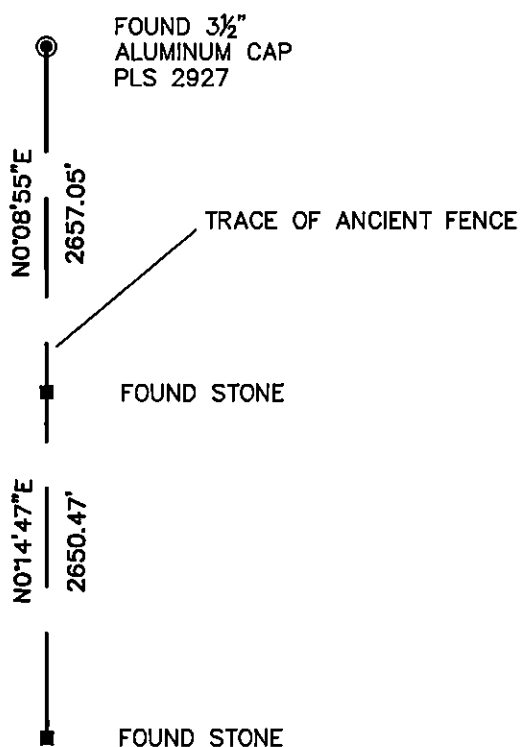
Record of original survey and citation of source of historical information (if corner is lost or obliterated). Description of corner monumentation evidence found and/or monument and accessories established to perpetuate the location of this corner. Sketch of relative location of monument, accessories, and reference points with course and distance to adjacent corner(s) (if determined in this survey). Method and rationale for reestablishment of lost or obliterated corner.

**RECORD:** SET A GRANITE BOULDER 17X8X6 FOR QUARTER SECTION CORNER

**MONUMENT FOUND:** FOUND 14X5 12INCH EXPOSED, 1/4 ON WEST FACE

**MONUMENT SET:** NONE

**REFERENCES:** NO NEARBY OBJECTS TO REFERENCE



DRAWING NOT TO SCALE

Date of Field Work: 02/03/03

Office Reference: 03116

## Monument Inscription

### Cross Index Plat

	1	2	3	4	5	6	7	8	9	10	11	12	13	14	15	16	17	18	19	20	21	22	23	24	25		
A																											A
B		+	+	+	+	+	+	+	+	+	+	+	+	+	+	+	+	+	+	+	+	+	+	+	+	+	B
C			6		5				4					3					2						1		C
D																											D
E																											E
F																											F
G																											G
H																											H
J																											J
K																											K
L																											L
M																											M
N																											N
O																											O
P																											P
Q																											Q
R																											R
S																											S
T																											T
U																											U
V																											V
W																											W
X																											X
Y																											Y
Z																											Z

Firm/Agency, Address

**STEIL SURVEYING SERVICES LLC**

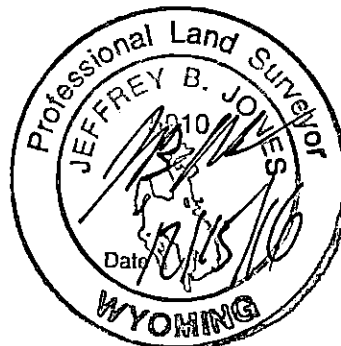
**1102 West 19th Street**

**Cheyenne, Wyoming 82001**

Telephone Number: **(307) 634-7273**

This corner record was prepared by me or under my direction and supervision.

SEAL & SIGNATURE



Corner Name WEST QUARTER Section 31, T 17 N, R 69 W, 6th P.M.

Cross-Index No.: X-1

County: LARAMIE Wyoming

SBRPEPLS/PLSW: March 1994; PLSW January 1998